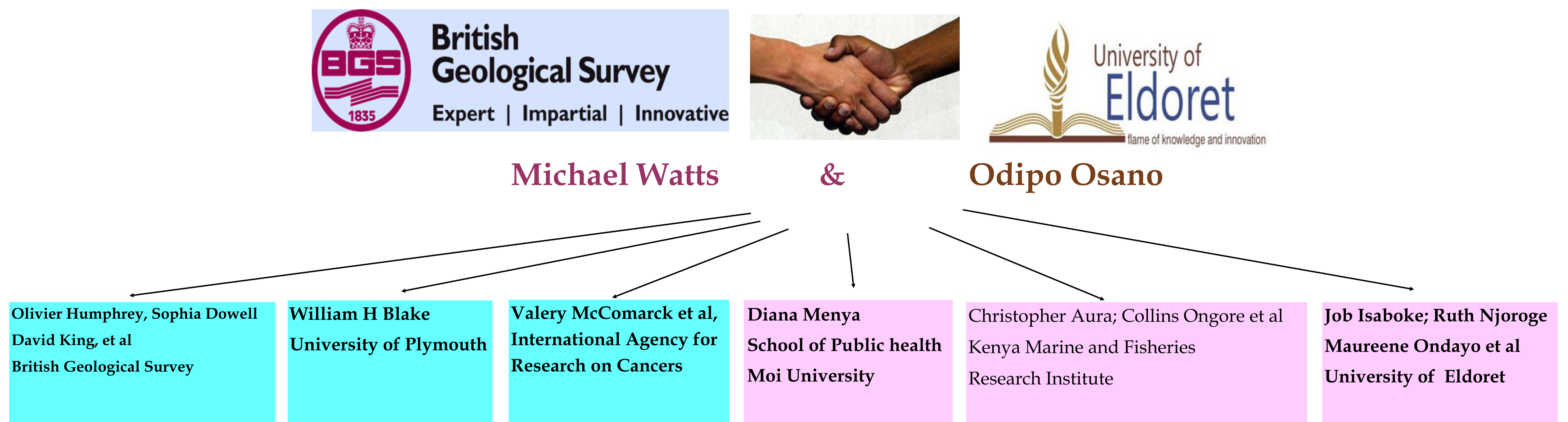


Experiences and Opportunities Arising from North-South Partnerships in Scientific Research

Odipo Osano, University of Eldoret, Kenya; odipoosano@uoeld.ac.ke ; www.uoeld.ac.ke
Michael Watts, British Geological Survey, mwatts@bgs.ac.uk; https://www.bgs.ac.uk/

Globalization has made internationalization of education and scientific research more urgent and important than ever before. A number of events in the recent decades have underlined the importance of connectedness and herein we underline experiences and opportunities that have unfolded from partnerships in scientific research. Partnerships is 17th of the well-recognized United Nations Sustainable Development Goals, which were set as blueprints for purposes of coordinating peace and prosperity of the human and the planet

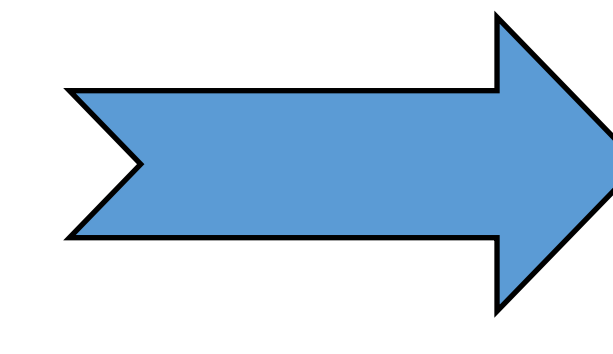
A Collaboration of the British Geological Survey and University of Eldoret, Kenya – Joys and Pains



Experiences



Brooding over possible causes Oesophageal squamous cell carcinoma and conditions related to geochemistry

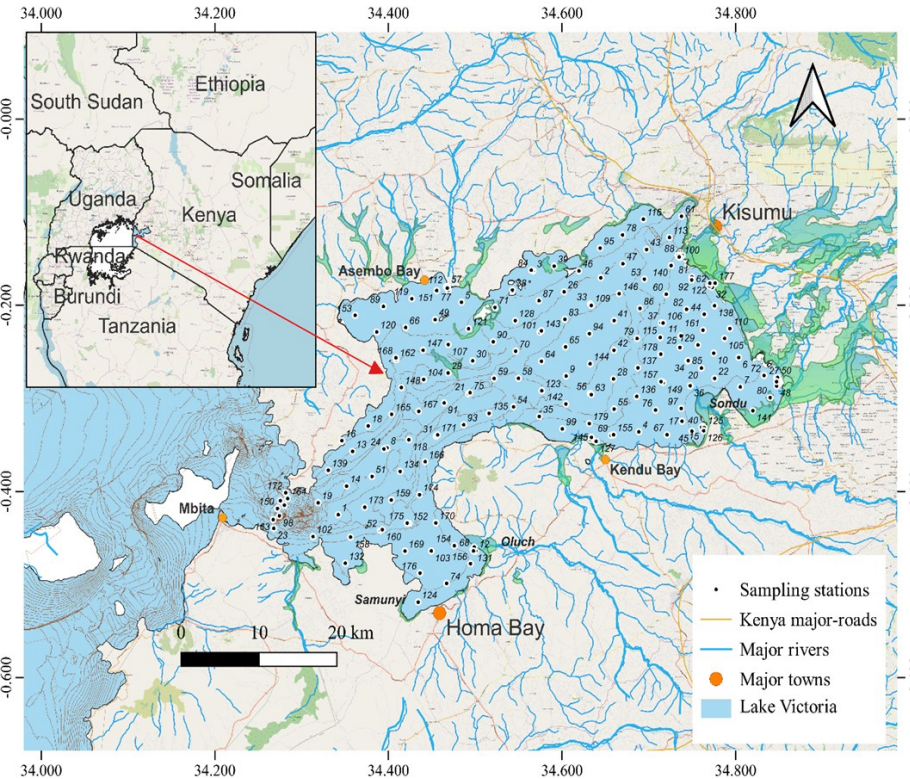


**HIGH
YIELDING
RELATIONSHIP**

- MOCA** Research on association of micronutrient levels with Oesophageal Squamous Cell Carcinoma
- THE ROYAL SOCIETY** Dynamics of land to lake transfer – Research
- GCRF** Aquaculture in Lake Victoria – Challenges for the industry
- Newton-Utufiti Fund** Aquaculture pathways to food security
- The British Academy** Joint training of early career researchers from Nairobi Univ, Moi Univ, Univ of Ibadan, & Univ of Eldoret by experts from North and South – ONLINE
- COMMONWEALTH SCHOLARSHIPS** Commonwealth fellowship of 2 technicians and 2 academic staff of UoE
- SEGH** Hosting of the SEGH 36th International Scientific conference by UoE
- >32 Peer reviewed joint publications
- 4 PhDs and 2 masters students jointly supervised
- Collaboration with government departments, Farmers, and the public
- FAO** Food and Agriculture Organization of the United Nations Global Soil Laboratory Network (GLOSOLAN) node
- Collaboration with Univ of Plymouth; Univ Nottingham; Nottingham Trent Univ
- Environmental Geochemistry and Health fellow
- The Oesophageal Squamous Cell Carcinoma African Prevention research (ESCAPE)

Opportunities

Research



- Better coordinated, and more in-depth research into the dynamics of land to lake transfer of nutrients and contaminants



- Leverage technology to augment joint research in remote locations.
- Optimized use of available resources in the South and North



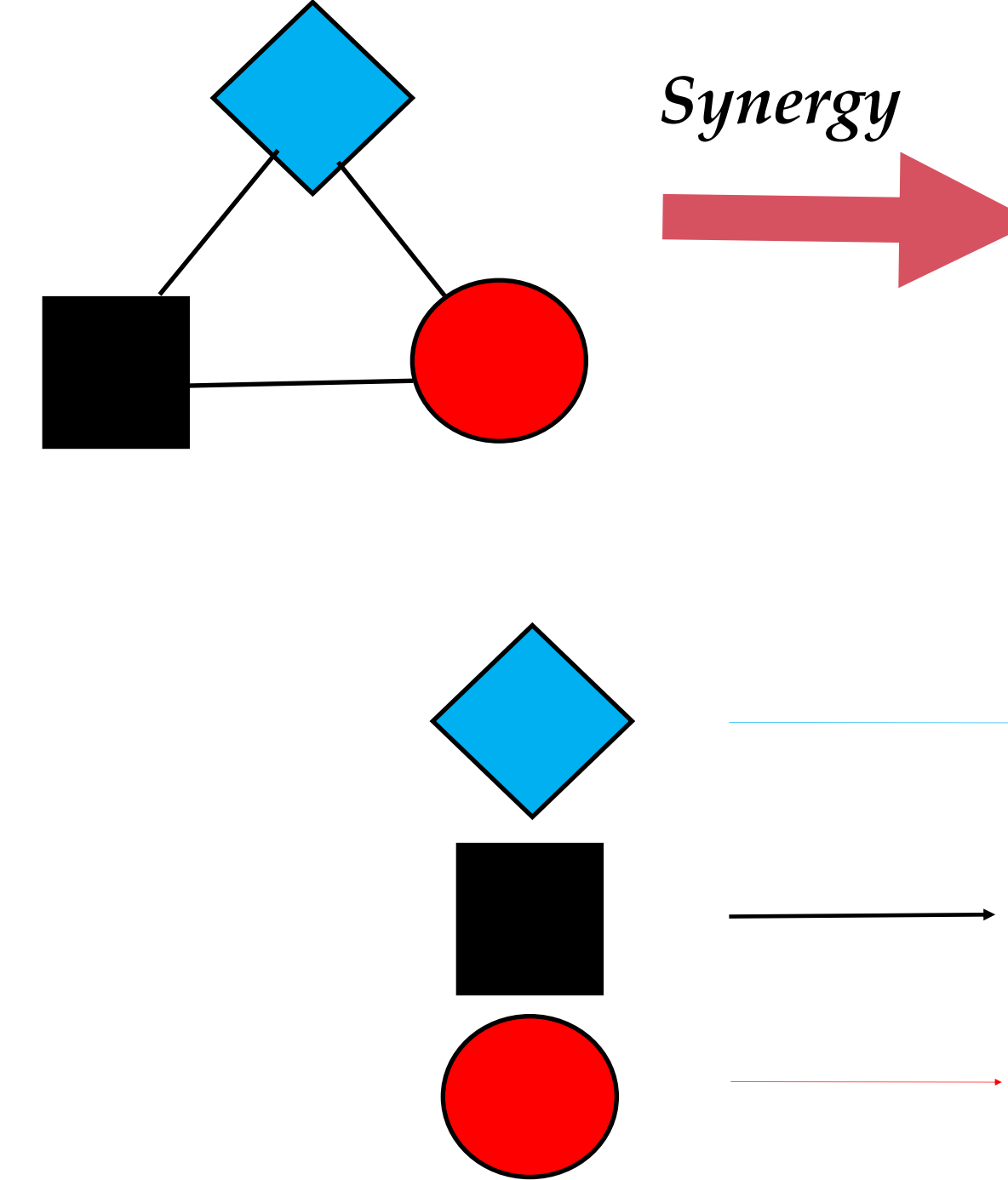
- Enhanced resilience – eg our joint research continued unabated during the Covid 19 pandemic

Training



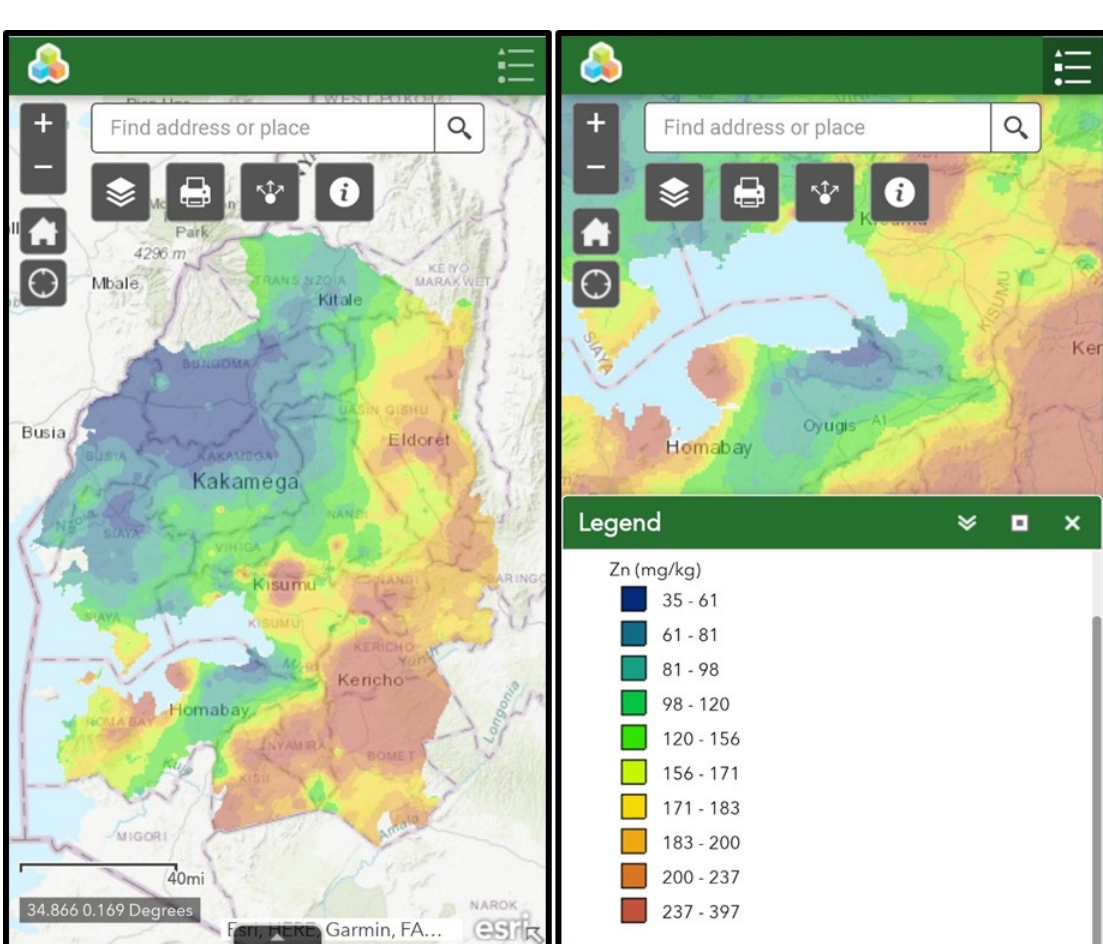
- Exploiting available communication technology to carry out advanced training
- Allowing trainees to interact with international colleagues improves interest
- Use of human resources in remote locations averts expenses and delays in knowledge transfer

Networks and Partnerships



- Networks and partnerships allow:
- Synergy
 - Complementarity
 - Continuity
 - Sustainability
 - Benchmarking
 - Better fundraising eg response to calls for proposals
 - Improved response to societal needs

Tools for solving societal problems



- Providing baseline geochemistry data to agri-community <https://www.bgs.ac.uk/news/geochemical-predictive-mapping-in-western-kenya/>
- Prediction of soil erosion in sub-Saharan Africa by use of Plutonium Isotope
- Others

Resources sharing



- Advanced analytical laboratory in the North
- Human resources in the North & South
- Use of infrastructure like boats, vehicle, & labs North & South
- Finance and in kind

Publications

1. Isaboke, J., Humphrey, O.S., Njoroge, R., Osano, O., Watts, M.J., 2026. Quantifying nutrient loss across particle size fractions in eroded tropical soils using 239+240Pu fallout radionuclides. Soil and Tillage Research 257, 106962.
2. Watts, M.J., Humphrey, O.S., King, D.C., Job, I., Aura, C., Blake, W., Osano, O., 2025. Dynamics of Environmental Geochemistry in a land-lake interphase in Kenya, Goldschmidt 2025 Conference. GOLDSCHMIDT.
3. Isaboke, J., Osano, O., Humphrey, O.S., Dowell, S.M., Njoroge, R., Watts, M.J., 2025. Influence of Agricultural Land Use Management on Soil Particle Size Distribution and Nutrient Adsorption in Western Kenya. Chemistry Africa 8, 1599-1610.
4. Humphrey, O.S., Isaboke, J., Osano, O., Aura, C.M., Blake, W.H., Watts, M.J., 2025. Sediment and soil source apportionment using geochemical fingerprinting techniques in the Winam Gulf, Lake Victoria. CATENA 255, 109053.
5. Aura, C.M., Awandui, H., Ongore, C.O., Musa, S., Humphrey, O.S., Isaboke, J., Watts, M.J., Osano, O., Blake, W.H., 2025. Outreach and knowledge mobilization for the effective use of adoptive strategies for land-lake based resilience. Discover Conservation 2, 47.
6. Ondayo, M.A., Watts, M.J., Humphrey, O.S., Osano, O., 2024. Public health assessment of Kenyan ASGM communities using multi-element biomonitoring, dietary and environmental data. Ecotoxicology and Environmental Safety 277, 116323.
7. King, D.C.P., Watts, M.J., Hamilton, E.M., Mortimer, R.J.G., Coffey, M., Osano, O., Ondayo, M.A., Di Bonito, M., 2024. Field method for preservation of total mercury in waters, including those associated with artisanal scale gold mining. Analytical Methods 16, 2669-2677.
8. King, D., Watts, M., Hamilton, E., Mortimer, R., Coffey, M., Osano, O., Di Bonito, M., 2024. Mercury speciation in environmental samples associated with artisanal small-scale gold mines using a novel solid-phase extraction approach to sample collection and preservation. Environmental Geochemistry and Health 46, 481.
9. Dowell, S.M., Humphrey, O.S., Gowing, C.J., Barlow, T.S., Chenery, S.R., Isaboke, J., Blake, W.H., Osano, O., 2024. Suitability of 210Pbex, 137Cs and 239+240Pu as soil erosion tracers in western Kenya. Journal of Environmental Radioactivity 271, 107327.
10. Dowell, S., Humphrey, O., Isaboke, J., Barlow, T., Blake, W., Osano, O., Watts, M., 2024. Plutonium isotopes can be used to model soil erosion in Kenya. Environmental Geochemistry and Health 46, 338.
11. Aura, C.M., Humphrey, O.S., Marriot, A.L., Watts, M.J., Ongore, C.O., Mwamburi, J.M., Osano, O., Coffey, T.J., 2024. Assessing the spatial distribution of elemental concentrations in surface sediments of Lake Victoria, Kenya: implications for ecological health and management. Environmental Geochemistry and Health 46, 137.
12. Watts, M.J., Argyraki, A., Barbieri, M., Brown, A., Button, M., Finkelman, R., Gibson, G., Humphrey, O., Huo, X., Hursthouse, A.S., Kanning, B., Marinho Reis, P., Middleton, D.R.S., Morton-Bermea, O., Nazarpour, A., Olatunji, A.S., Osano, O., Potgieter-Vermaak, S., Prater, C., Torrance, K., Wong, M.H., Zhang, C., Zia, M., 2023. Editorial: The society for environmental geochemistry and health (SEGH): 50 years and beyond. Environmental Geochemistry and Health 45, 1165-1171.
13. Watts, M., Humphrey, O., Hamilton, E., Marriot, A., Dowell, S., Blake, W., Isaboke, J., Osano, O., Mwamburi, J., Aura, C.M., 2023. Novel geochemistry to determine the dynamics of land to lake transfers in the Lake Victoria basin to inform coordinated land-lake management strategies.
14. Ondayo, M.A., Watts, M.J., Hamilton, E.M., Mitchell, C., Mankelow, J., Osano, O., 2023. Artisanal gold mining in Kakamega and Vihiga counties, Kenya: potential human exposure and health risk. Environmental Geochemistry and Health 1-23.
15. Marriot, A., Osano, O., Coffey, T., Humphrey, O., Ongore, C., Watts, M., Aura, C., 2023. Considerations for environmental biogeochemistry and food security for aquaculture around Lake Victoria, Kenya. Environmental Geochemistry and Health 45, 6137-6162.
16. Isaboke, J., Osano, O., Humphrey, O.S., Dowell, S.M., Watts, M.J., 2023. The nutritional quality of forage grass changes due to changing soil chemistry resulting from different land-use management in the Oroba Valley, Kenya. African Journal of Education, Science and Technology 7, 40-54.
17. Humphrey, O., Marriot, A., Dowell, S., King, D., Watts, M., 2023. Dynamics of environmental and geochemistry in a lake-wide basin: stakeholder engagement meeting, environmental change, adaptations and resilience/ BGS International Geoscience Research & Development Programme Internal Report OR/23/010 British Geological Survey Internal Report, OR/23/010 , p. 20.
18. Humphrey, O., Aura, C., Ongore, C., Osano, O., Watts, M., 2023. Workshop on dynamics of land to lake transfers in the Winam Gulf. British Geological Survey Internal Report, OR/23/056. , p. 25.
19. Dowell, S.M., Humphrey, O.S., Blake, W.H., Osano, O., Chenery, S., Watts, M.J., 2023. Ultra-trace analysis of fallout plutonium isotopes in soil: emerging trends and future perspectives. Chemistry Africa, 1-16.
20. Dowell, S.M., Barlow, T.S., Chenery, S.R., Humphrey, O.S., Isaboke, J., Blake, W.H., Osano, O., Watts, M.J., 2023. Optimisation of plutonium separations using TEVA cartridges and ICP-MS/MS analysis for applicability to large-scale studies in tropical soils. Analytical Methods 15, 4226-4235.
21. Otieno, M.A., Osano, O., Marriot, A.L., Watts, M.J., 2022. A Comparative Analysis of Potential Toxic and Essential Elements in in-situ Derived and Commercial Fish Feeds Applied in Cage Aquaculture Fish, Lake Victoria Basin, Kenya. Africa Environmental Review Journal 5, 87-98.
22. Humphrey, O.S., Osano, O., Aura, C.M., Marriot, A.L., Dowell, S.M., Blake, W.H., Watts, M.J., 2022. Evaluating spatio-temporal soil erosion dynamics in the Winam Gulf catchment, Kenya for enhanced decision making in the land-lake interface. Science of the Total Environment 815, 151975-151975.
23. Watts, M.J., Menyha, D., Humphrey, O.S., Middleton, D.S., Hamilton, E., Marriot, A., McCormack, V., Osano, O., 2021. Human urinary biomonitoring in Western Kenya for micronutrients and potentially harmful elements. International Journal of Hygiene and Environmental Health 238, 113854.
24. Watts, M., Humphrey, O., Cave, M., Osano, O., Menyha, D., 2021. Western Kenya soil geochemistry. NERC EDS National Geoscience Data Centre (Dataset).
25. Watts, M.J., Middleton, D.R., Marriot, A., Humphrey, O.S., Hamilton, E., McCormack, V., Menyha, D., Farebrother, J., Osano, O., 2020. Iodine status in western Kenya: a community-based cross-sectional survey of urinary and drinking water iodine concentrations. Environmental geochemistry and health 42, 1141-1151.
26. Watts, M.J., Middleton, D.R., Marriot, A.L., Humphrey, O.S., Hamilton, E.M., Gardner, A., Smith, M., McCormack, V.A., Menyha, D., Munishi, M.O., Mmbaga, B.T., Osano, O., 2019. Source apportionment of micronutrients in the diets of Kilimanjaro, Tanzania and Counties of Western Kenya. Scientific Reports 9, 1-14.
27. Middleton, D.R.S., McCormack, V.A., Munishi, M.O., Menyha, D., Marriot, A.L., Hamilton, E.M., Mwasamwaja, A.O., Mmbaga, B.T., Samoei, D., Osano, O., Schüz, J., Watts, M.J., 2019. Intra-household agreement of urinary elemental concentrations in Tanzania and Kenya: potential surrogates in case-control studies. J Expo Sci Environ Epidemiol 29, 335-343.
28. Middleton, D.R., Menyha, D., Kigen, N., Oduor, M., Maina, S.K., Some, F., Chumba, D., Ayuo, P., Osano, O., 2019. Hot beverages and oesophageal cancer risk in western Kenya: Findings from the ESCAPE case-control study. International journal of cancer 144, 2669-2676.
29. Menyha, D., Maina, S.K., Kibosia, C., Kigen, N., Oduor, M., Some, F., Chumba, D., Ayuo, P., Middleton, D.R., Osano, O., 2019. Dental fluorosis and oral health in the African Oesophageal Cancer Corridor: Findings from the Kenya ESCAPE case-control study and a pan-African perspective. International journal of cancer 145, 99-109.
30. Menyha, D., Kigen, N., Oduor, M., Maina, S.K., Some, F., Chumba, D., Ayuo, P., Osano, O., Middleton, D.R., Schüz, J., 2019. Traditional and commercial alcohols and esophageal cancer risk in Kenya. International journal of cancer 144, 459-469.
31. Middleton, D.R.S., McCormack, V.A., Munishi, M.O., Menyha, D., Marriot, A.L., Hamilton, E.M., Mwasamwaja, A.O., Mmbaga, B.T., Samoei, D., Osano, O., Schüz, J., Watts, M.J., 2018. Intra-household agreement of urinary elemental concentrations in Tanzania and Kenya: potential surrogates in case-control studies. Journal of Exposure Science and Environmental Epidemiology 29, 335-343.
32. McCormack, V.A., Menyha, D., Munishi, M.O., Dzamalala, C., Gasmelseed, N., Roux, M.L., Assefa, M., Osano, O., Watts, M., Mwasamwaja, A.O., Mmbaga, B.T., Marulaja, G., Abnet, C.C., Dawsey, S.M., Schüz, J., 2017. Informing etiologic research priorities for squamous cell esophageal cancer in Africa: A review of setting-specific exposures to known and putative risk factors. Int. J. Cancer 140, 259-271.

EQUITABILITY